

# GSST Back-To-School Guide

*Academic Year 2022-23 Quick-Start Information*

## Welcome to GSST, Classes of 2023 & 2024!

In this newsletter, you will find links to required forms to be completed by students and parents/guardians, as well as forms for parking permit requests, student driver with student passenger permissions, and links to find other important information. **Please, follow the instructions to log into your GSST email account, Canvas, and GSST PowerSchool BEFORE the first day of school. We will help to troubleshoot difficulties on Day 1.**

## GSST First Day of Classes

**Monday, August 29, 2022**

Building doors open at 6:45 a.m.

**AM session:** 7:10 a.m., **PM session:** 11:20 a.m.

**Building address:** 520 Butler Farm Rd., Hampton, VA 23666

**Students will be directed to our Junior Research Room (A-67) to receive their class schedules and then report to their first period class.**

Students who are unable to attend on the first day of school should contact Ms. Flath at 757-766-1100, x3326, [mara.flath@nhrec.org](mailto:mara.flath@nhrec.org).

## GSST E-mail & PowerSchool Accounts

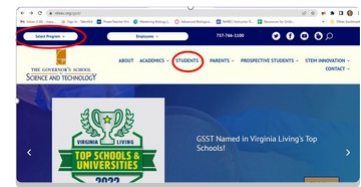
**BEFORE YOU COME FOR THE FIRST DAY**, please attempt to sign in to your Governor's School email, Powerschool, and Canvas accounts using the information included in **Governor's School News 2022-23, #2**, sent to your email on August 24, 2022.



*Important Information for Parents and Students Regarding Logging into New Horizons Accounts*

**NHREC Website**

A quick source of information and announcements is the New Horizons Website at [nhrec.org](http://nhrec.org). Once there, on the "Select Program" drop-down menu, choose [Governor's School for Science & Technology](#). Under the drop-down menu for Students, you will find links to Canvas, Policies, Transportation information, etc.



## NHREC App

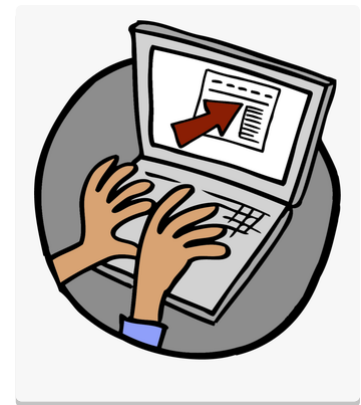
Download the NHREC App and select Governor's School as well as NHREC as the schools to follow to get rapid updates and announcements regarding emergency closures, etc.

[Get it on the App Store](#)

[Get it on Google Play](#)

## Required Forms

NHREC requires updated medical and contact information, as well as acknowledgement of the GSST Honor Pledge. Access, complete, and submit these **Mandatory Forms** via PowerSchool, by logging into your New Horizons GSST Powerschool account and scrolling down and selecting "**BioUpdate**". Includes Medical Forms, Updated contact information, Honor Pledge, etc.



Good to KNOW...

# Academic Calendars

[Regional Calendar Link](#). Look for your school district as well as NHREC and compare dates for start/end of quarters and semesters, early dismissal and no-school days.

See the Continuous Learning Plan, below, for procedures to follow when your home school is not in session.

# Bell Schedule

- Districts: HCS, PCS, GCS, & WJCC.

- Districts: NNPS, IOW, & YCS.

Any student accepted to GSST for a different session than listed here should report promptly at the time given for their assigned session.

[Download Bell Schedule here.](#)

# GSST Grades on Powerschool

- Follow progress throughout the school year online
- Access individual course assignments
- View grades, attendance and schedule
- Communicate with teachers

## Student and Parent Sign-In

## Creating a Parent Portal Account

"Parent Portal" enables parents to see their child's attendance, grades, assignments, and other academic information online. Complete instructions can be found on our [website PowerSchool link](#).

STUDENT RIGHTS  
AND  
RESPONSIBILITIES  
HANDBOOK  
2021 – 2022



## GSST Policies

The [Student Handbook](#) is designed to provide you with essential information about New Horizons Regional Education Centers and to help you plan for a successful school year.

Full [Policies](#) can be found on our website.



THE GOVERNOR'S SCHOOL  
for  
SCIENCE AND TECHNOLOGY  
**Honor Pledge**

## Academic Integrity

The academic community highly values the acknowledgment of other people's contributions to knowledge. The disciplinary consequences of academic dishonesty at GSST can be severe. As a student you could receive a failing grade, suspension from school, jeopardize references or in extreme cases, you could lose your scholarship awards and acceptance into college. Read the entire [Honor Pledge](#).



## Canvas

All GSST Courses will have supporting materials posted on Canvas. Students will automatically be enrolled in the appropriate Canvas "courses" and must check their courses frequently, at least twice daily for course-specific announcements, course assignments, assignment submission, etc. [GSST Canvas access Link.](#)

### Parent Access to Canvas:

Parents can view due dates, announcements, and other class content. In addition, there is an app called "Canvas Parent" to stay informed.

[How to observe your student in Canvas](#)

[Canvas Parent App Letter Access to Canvas](#)





## Student Drop-Off

Parents & Guardians who are driving students to GSST must follow directional signage. They should enter the parking lot in front of the building and park in a "Visitor" space while their student exits the vehicle. Please **DO NOT stop in the Bus Lane** immediately in front of the building and do exercise caution as you exit the Visitor space to leave.

**Appropriate forms ([LINK](#)) must be completed for student drivers who are transporting other students who are not family members.**

Parents/guardians of both the driver and rider must complete the paper forms which must be submitted to Dr. Patterson.



## Bus Transportation

Busing to and from GSST is provided by your school district transportation department. Any questions you have regarding times, locations, etc. must be addressed directly to them.

### Transportation phone numbers by district:

- Gloucester (804) 693-2127
- Hampton (757) 727-1079
- Isle of Wight (757) 357-8816 or 357-9926
- Newport News (757) 881-5052 or 868-3052
- Poquoson (757) 868-3052 or 868-7161
- Williamsburg/James City County (757) 565-0808
- York (757) 898-0344

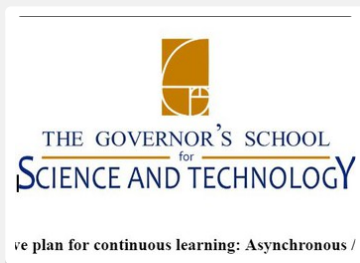


## Student Parking Permits

A limited number of **student parking permits** will be available for purchase, \$25/each for the academic year. Payment will be made online via <https://nhrec.revtrak.net/> and the confirmation voucher must be printed and delivered to our school office to receive the rearview mirror tag.

**Students must follow directional signage and drive around the building in a counter-clockwise direction.**

Student parking spaces are those **\*NOT\*** marked with "Visitor", "E-number" (Employee spaces), or "OA" (Office staff and Administration spaces).

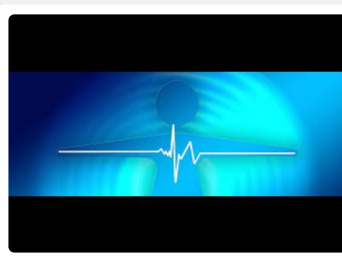


## Cohesive Plan for Continuous Learning

As a Regional Education Center, NHREC cannot dismiss students for all home school holidays, early dismissals, and teacher workdays.

If a student is absent from school, [this Plan](#) will ensure continuous learning via either synchronous Virtual instruction or asynchronous work assigned by the GSST instructor.

If a student is unable to attend GSST in person, the parent/guardian must contact the school. Student attendance via either synchronous (Zoom) session or asynchronous (alternate assignment) is expected. Students who feel unwell must contact their teacher and then complete assignments as arranged, once they have recovered sufficiently to work.



## Current COVID Policy

Masks are currently optional and, no matter one's individual choice, the choices of others will be respected. Students who feel unwell should plan to stay home, notify their teachers, and attend class virtually via CANVAS.

It is imperative that GSST faculty are notified by the parent/guardian if the student is unable to physically attend class for any reason.

Any updates to the current policy will be posted on the [website](#).



## GSST Clubs & Teams

Several Clubs and Competition Teams are available to GSST students. Descriptions and Faculty Sponsor information can be found using this [LINK to Clubs List](#)